

imageCLASS

Canon

Delighting You Always

Leading Print Efficiency for Every Business

imageCLASS Range Brochure

MULTI
FUNCTION
PRINTER



SINGLE
FUNCTION
PRINTER



Business Can Be Simple

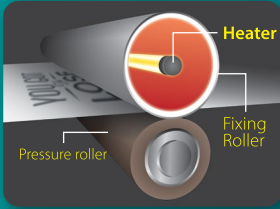
imageCLASS A CLASS OF EXCELLENCE



Step into class-leading print speed and professional print quality with a comprehensive range of imageCLASS laser printers.

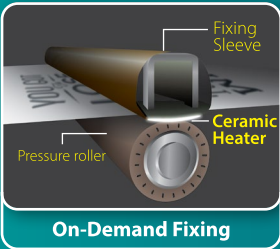
Built with innovative solutions and advanced features ranging from wireless connectivity to print security, imageCLASS laser printers are the perfect companion to help every business maintain office productivity and efficiency.

FAST, PROFESSIONAL PRINT QUALITY



Conventional Method

Expect professional quality documents, with razor sharp accuracy and highly legible text, right down to the smallest font sizes with imageCLASS printers.



On-Demand Fixing

Unlike conventional fixing method, Canon's proprietary **On-Demand Fixing** technology enables the fusing system to be ready almost instantaneously, resulting in a quick first print in mere seconds. This translates to more print jobs with shorter waiting time.

MAKE AN IMPACT WITH COLOUR PRINTING

V² COLOUR

- Improved colour saturation
- Better sharpness

Use colour printing to convey your business ideas effectively. Wider colour reproduction range brings vivid and vibrant output with sharper and clearer graphics



Without V² Colour



With V² Colour

DUPLEX PRINTING WITH EXCELLENT PRODUCTIVITY



- Faster duplex prints

The efficient duplex print mechanism makes it possible to print on both sides of the paper without losing your productivity.

CANON PRINT BUSINESS



Get the best of both direct printing and scanning with just one app. Print and scan documents, photos, web pages and emails seamlessly with Canon PRINT Business app.



Download and install from iTunes®



Download and install from Google Play™ store



NEAR FIELD COMMUNICATION (NFC)



Enjoy the added convenience of contactless printing with the NFC-enabled* imageCLASS printers. Just tap to print.

*Supports selected Android devices



QR CODE SCAN



Ensure an accurate connection with the correct printer by simply using the QR code scan.



MOPRIA®

Mopria® is a mobile printing standard that enables printing between mobile devices and Mopria-certified Canon printers on the same network without having to download additional applications or set-up.



APPLE AIRPRINT®

Delight in the ease of printing from an Apple® device without having to download the dedicated application or install the dedicated driver.

Disclaimer:

- AirPrint® is trademark of Apple Inc.
- The Mopria® word mark and the Mopria® Logo are registered and/or unregistered trademarks of Mopria Alliance, Inc. in the United States and other countries. Unauthorized use is strictly prohibited.



GREATER MOBILITY ANYWHERE

Armed with a suite of Canon applications as well as support for third party printing solutions, you can print and scan directly from your smartphone or tablet without the use of a computer.



NETWORK PRINTING

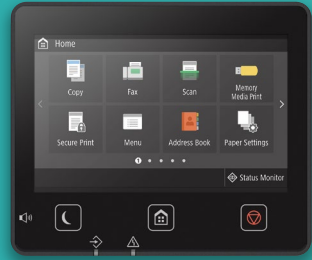
Printing within small workgroups and offices is made easy with the imageCLASS printers' embedded networking standards. With built-in LAN and wireless network connectivity, it is effortlessly convenient to share print resources with other users on the same network.

DIRECT CONNECTION

Connect to the printer directly without requiring a wireless router. Visitors can access the printer without the need to connect to the office network.

◦ INTUITIVE EASE OF USE

Enhance your user experience with the vari-angle, **5-inch colour touchscreen LCD**. The user-friendly intuitive display features left-right scrolling for easy navigation and a tilt panel to adjust for viewing angle. The large panel display provides the advantage of easier access to perform the desired function.



◦ PRINT AND SCAN EFFORTLESSLY



Enjoy the convenience of **directly printing from and scanning to USB memory devices** in various formats such as PDF, JPEG and TIFF* without using a computer.

*TIFF files must be in MMR or JPEG compression formats. Some TIFF images downloaded from the Internet may not be readable.

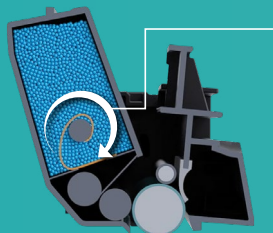
◦ HASSLE-FREE MAINTENANCE



Save time and effort with Canon's **All-in-One toner cartridge**. Combining the photosensitive drum, toner and waste toner container into one compact unit, you can be assured of continuous high quality printouts and fuss-free replacement of the cartridges in the shortest time possible.

◦ AUTO REMOVAL OF TONER SEAL

The auto toner seal removal system eliminates the need to remove the toner seal manually, making cartridge replacements easier than before.



Upon powering on the printer, the seal will automatically wind and be removed.



DEPARTMENT ID

Secure your system and keep track of print, copy and scan totals for all your business groups with the **Department ID** management function.

Administrators can restrict accessible functions such as copying and scanning. They can also set designated access rights for each individual through multiple IDs or multiple groups of users, ensuring only authorized users are allowed access to the functions.

Register up to

300

Department IDs



SECURE PRINT

Keep confidential documents secure from unintended recipients with the native **Secure Print** function over a networked environment. Print jobs are released only upon authentication by users at the printer.





IMPROVE YOUR PRINT EXPERIENCE

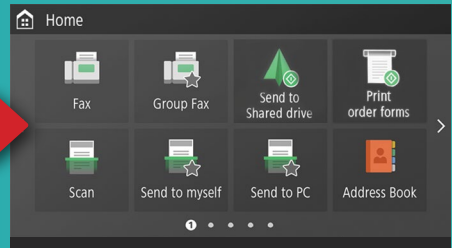
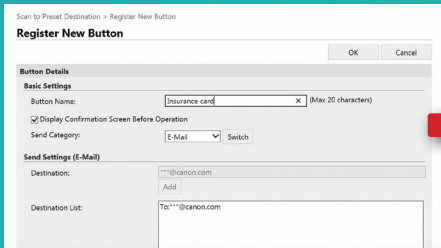
Application Library is a built-in feature that empowers you to customise functions to simplify existing workflows and improve productivity.



i From uploading frequently used templates to pre-configuring scan options and destinations, you can organise buttons to best fit your business workflow.

PRINT TEMPLATE

Store frequently used forms / templates with predefined settings for quick printing.



SCAN TO PRESET DESTINATION

Send your scanned documents straight to email or pre-determined location. With "Name and Scan" function, you may configure your digital documents to be archived in the shared folder and sort them based on file name or User ID.

ID CARD COPY (SIMPLE)

Copy both sides of a card onto the same side of a page.

STANDBY SLIDE

Effectively utilize the colour display as a digital notice board to showcase simple instructions, important announcements or basic reminders.

CONSUMABLES INFORMATION

Keep track of remaining toner level, so that you can plan to purchase a replacement toner cartridge.



Auto 2-sided Print

MAXIMISE SPACE, MINIMISE WASTE

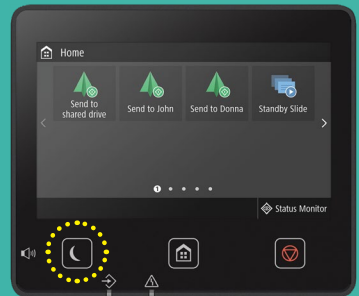
Reduce paper wastage by half with the **2-sided printing** for copying and printing from PC as well as receiving incoming faxes.

Achieve additional savings by combining 2-sided printing with N-on-1 printing. You can print up to 32 pages on a single sheet, which is economical and environmentally friendly.



CONSERVE ENERGY

Printer automatically enters **Sleep mode** after remaining idle for a period of time, effectively lowering energy consumption, shrinking your utility bills.



TRACK YOUR CONSUMPTION

Keep well informed of your consumption. The Eco report summarizes monthly averaged paper and energy usage, and provides suggestions on how to reduce paper usage and conserve energy.

LASER SINGLE FUNCTION - MONOCHROME

LBP162dw



LBP226dw



LBP228x



A4 Speed (ppm)		28 ppm	38 ppm	38 ppm
Print Resolution		600 x 600 dpi 1,200 x 1,200 dpi (equivalent) 2,400 (equivalent) x 600 dpi	600 x 600 dpi 1,200 x 1,200 dpi (equivalent)	600 x 600 dpi 1,200 x 1,200 dpi (equivalent)
First Printout Time (FPOT; A4)		Approx. 5.2 secs	Approx. 5.5 secs	Approx. 5.5 secs
Auto Duplex Printing		✓	✓	✓
Display		5-line LCD	5-line LCD + Numeric Keys	5.0" Colour Touchscreen LCD
Interface / Connectivity	USB 2.0 High Speed & Ethernet	✓	✓	✓
	Gigabit Ethernet	X	✓	✓
	Wi-Fi	✓	✓	✓
	Direct Connection	✓	✓	✓
Mobile Solutions	Canon PRINT Business	✓	✓	✓
	Canon Print Service	✓	✓	✓
	Apple AirPrint	✓	✓	✓
	Mopria® Print Service	✓	✓	✓
Page Description Language		UFR II LT, PCL 6	UFR II, PCL 6, PostScript 3	UFR II, PCL 6, PostScript 3
Paper Input	Standard	250 sheets	250 sheets	250 sheets
	Multi-purpose Tray	1 sheet	100 sheets	100 sheets
	Optional	X	550 sheets x 1 [Cassette Feeding Module - AH1]	550 sheets x 1 [Cassette Feeding Module - AH1]
Department ID		X	300 Dept IDs	300 Dept IDs
Secure Print		X	✓	✓
Application Library		X	X	✓
Device Memory (Standard)		256 MB	1 GB	1 GB
Processor Speed		400 MHz	800 MHz x 2	800 MHz x 2
Monthly Duty Cycle^{*1}		30,000 pages	80,000 pages	80,000 pages
Recommended Monthly Print Volume		250 - 2,500 pages	750 - 4,000 pages	750 - 4,000 pages
Dimensions (W x D x H)		371 x 404 x 225 mm	401 x 373 x 250 mm	438 x 373 x 312 mm
Consumables	Model	Cartridge 051 Cartridge 051H Drum Cartridge 051	Cartridge 057 Cartridge 057H	Cartridge 057 Cartridge 057H
	Bundled	1,000 pages ^{*2}	3,100 pages ^{*2}	3,100 pages ^{*2}
	Other	-	-	-

LASER SINGLE FUNCTION - MONOCHROME

LBP325x



LBP351x



LBP352x



A4 Speed (ppm)		43 ppm	55 ppm	62 ppm
Print Resolution		600 x 600 dpi 1,200 x 1,200 dpi (equivalent)	600 x 600 dpi 1200 x 1200 dpi (equivalent) 2400 (equivalent) x 600 dpi	600 x 600 dpi 1200 x 1200 dpi (equivalent) 2400 (equivalent) x 600 dpi
First Printout Time (FPOT; A4)		Approx. 5.7 secs	Approx. 7.2 secs	Approx. 7.0 secs
Auto Duplex Printing		✓	✓	✓
Display		5-Line LCD + Numeric Keys	5-Line LCD + Numeric Keys	5-Line LCD + Numeric Keys
Interface / Connectivity	USB 2.0 High Speed & Ethernet	✓	✓	✓
	Gigabit Ethernet	✓	✓	✓
	Wi-Fi	X	X	X
	Direct Connection	X	X	X
Mobile Solutions	Canon PRINT Business	✓	✓	✓
	Canon Print Service	✓	✓	✓
	Apple AirPrint	✓	✓	✓
	Mopria® Print Service	✓	✓	✓
Page Description Language		UFR II, PCL 6, PostScript 3, PDF, XPS	UFR II, PCL 6, PostScript 3, PDF, XPS	UFR II, PCL 6, PostScript 3, PDF, XPS
Paper Input	Standard	550 sheets	500 sheets	500 sheets
	Multi-purpose Tray	100 sheets	100 sheets	100 sheets
	Optional	550 sheets x 3 [Paper Feeder PF-C1]	500 sheets x 3 (Paper Feeder PF-B1) 1,500 sheets (Paper Deck PD-G1) 450 sheets [A5 Cassette C-A1] 450 sheets (Custom Media Cassette CM-A1) 75 sheets (Envelope Feeder EF-A1)	500 sheets x 3 (Paper Feeder PF-B1) 1,500 sheets (Paper Deck PD-G1) 450 sheets [A5 Cassette C-A1] 450 sheets (Custom Media Cassette CM-A1) 75 sheets (Envelope Feeder EF-A1)
Department ID		300 Dept IDs	300 Dept IDs	300 Dept IDs
Secure Print		✓	✓ (Requires optional SD Card-C1)	✓ (Requires optional SD Card-C1)
Application Library		X	X	X
Device Memory (Standard)		1 GB	1 GB	1 GB
Processor Speed		528 MHz + 264 MHz	528 MHz + 264 MHz	528 MHz + 264 MHz
Monthly Duty Cycle*1		150,000 pages	250,000 pages	280,000 pages
Recommended Monthly Print Volume		2,000 - 7,500 pages	3,000 - 16,000 pages	5,000 - 20,000 pages
Dimensions (W x D x H)		417 x 376 x 275 mm	415 x 529 x 438 mm	415 x 529 x 438 mm
Consumables	Model	Cartridge 056 Cartridge 056L Cartridge 056H	Cartridge 039 Cartridge 039H	Cartridge 039 Cartridge 039H
	Bundled	5,100 pages*2	11,000 pages*2	11,000 pages*2
	Other	-	-	-

*1 Monthly Duty Cycle value provides a means of comparison for product robustness in relation to other Canon laser devices, and does not refer to actual maximum image output per month. *2 Declared yield in accordance with ISO/IEC 19752

LASER SINGLE FUNCTION - COLOUR

LBP621Cw

LBP623Cdw


A4 Speed (ppm) Mono / colour		18 ppm / 18 ppm	21 ppm / 21 ppm
Print Resolution		600 x 600 dpi 1,200 x 1,200 dpi (equivalent)	600 x 600 dpi 1,200 x 1,200 dpi (equivalent)
First Printout Time (FPOT; A4)		Approx. 10.4 / 10.5 secs (Monochrome / Colour)	Approx. 10.4 / 10.5 secs (Monochrome / Colour)
Auto Duplex Printing		X	✓
Display		5-line LCD + Numeric keys	5-line LCD + Numeric keys
Interface / Connectivity	USB 2.0 High Speed & Ethernet	✓	✓
	Gigabit Ethernet	✓	✓
	Wi-Fi	✓	✓
	Direct Connection	✓	✓
Mobile Solutions	Canon PRINT Business	✓	✓
	Canon Print Service	✓	✓
	Apple AirPrint	✓	✓
	Mopria® Print Service	✓	✓
Page Description Language		UFR II	UFR II, PCL 6, PostScript 3
Paper Input	Standard	250 sheets	250 sheets
	Multi-purpose Tray	1 sheet	1 sheet
	Optional	-	-
Department ID		300 Dept IDs	300 Dept IDs
Secure Print		✓	✓
Application Library		X	X
Device Memory (Standard)		1 GB	1 GB
Processor Speed		800 MHz x 2	800 MHz x 2
Monthly Duty Cycle^{*1}		30,000 pages	30,000 pages
Recommended Monthly Print Volume		250 - 2,500 pages	250 - 2,500 pages
Dimensions (W x D x H)		430 x 418 x 287 mm	430 x 418 x 287 mm
Consumables	Model	Cartridge 054 BK / C / M / Y Cartridge 054H BK / C / M / Y	Cartridge 054 BK / C / M / Y Cartridge 054H BK / C / M / Y
	Bundled (Mono / Colour)	1,500 pages ^{*2} / 680 pages ^{*2}	1,500 pages ^{*2} / 680 pages ^{*2}
	Other	-	-

LASER SINGLE FUNCTION - COLOUR

LBP664Cx

LBP712Cx


A4 Speed (ppm) Mono / colour		27 ppm / 27 ppm	38 ppm / 38 ppm
Print Resolution		600 x 600 dpi 1,200 x 1,200 dpi (equivalent)	600 x 600 dpi 9600 (equivalent) x 600 dpi
First Printout Time (FPOT; A4)		Approx. 7.7 / 8.6 secs (Monochrome / Colour)	Approx. 5.1 / 6 secs (Monochrome / Colour)
Auto Duplex Printing		✓	✓
Display		5" Colour Touchscreen LCD	5-line LCD + Numeric keys
Interface / Connectivity	USB 2.0 High Speed & Ethernet	✓	✓
	Gigabit Ethernet	✓	✓
	Wi-Fi	✓ (NFC)	✗
	Direct Connection	✓	✗
Mobile Solutions	Canon PRINT Business	✓	✓
	Canon Print Service	✓	✓
	Apple AirPrint	✓	✓
	Mopria® Print Service	✓	✓
Page Description Language		UFR II, PCL 6, PostScript 3	UFR II, PCL 6, PostScript 3, PDF, XPS
Paper Input	Standard	250 sheets	550 sheets
	Multi-purpose Tray	50 sheets	100 sheets
	Optional	550 sheets x 1 [Cassette Feeding Module - AF1]	550 sheets x 3 [Paper Feeder PF-D1]
Department ID		300 Dept IDs	300 Dept IDs
Secure Print		✓	✓ (Requires optional SD Card-C1)
Application Library		✓	✗
Device Memory (Standard)		1 GB	1 GB
Processor Speed		800 MHz x 2	528 MHz + 264 MHz
Monthly Duty Cycle^{*1}		50,000 pages	80,000 pages
Recommended Monthly Print Volume		750 - 4,000 pages	2,000 - 7,500 pages
Dimensions (W x D x H)		476 x 469 x 379 mm	458 x 464 x 388 mm
Consumables	Model	Cartridge 055 BK / C / M / Y Cartridge 055H BK / C / M / Y	Cartridge 040 BK / C / M / Y Cartridge 040H BK / C / M / Y
	Bundled (Mono / Colour)	1,200 pages ^{*2} / 1,200 pages ^{*2}	6,300 pages ^{*2} / 5,400 page ^{*2}
	Other	-	Waste Toner Box WT-B1

^{*1} Monthly Duty Cycle value provides a means of comparison for product robustness in relation to other Canon laser devices, and does not refer to actual maximum image output per month. ^{*2} Declared yield in accordance with ISO/IEC 19798

A3 LASER SINGLE FUNCTION - MONOCHROME

LBP8100n

LBP8780x


A4 Speed (ppm)		A4: 30 ppm A3: 15 ppm	A4: 40 ppm A3: 20 ppm
Print Resolution		600 x 600 dpi 1200 x 1200 dpi (equivalent) 2400 (equivalent) x 600 dpi	600 x 600 dpi 1200 x 1200 dpi (equivalent) 2400 (equivalent) x 600 dpi
First Printout Time (FPOT; A4)		Approx. 9.3 secs	9.3 secs or less
Auto Duplex Printing		✓ Requires optional Duplex Unit DU-D1	✓
Display		7 LED + 3 Buttons	5-line LCD
Interface / Connectivity	USB 2.0 High Speed & Ethernet	✓	✓
	Gigabit Ethernet	✗	✓
	Wi-Fi	✗	✗
	Direct Connection	✗	✗
Mobile Solutions	Canon PRINT Business	✓	✓
	Canon Print Service	✓	✓
	Apple AirPrint	✗	✗
	Mopria® Print Service	✗	✗
Page Description Language		UFR II LT	UFR II, PCL 6, PostScript 3, PDF, XPS
Paper Input	Standard	250 sheets	250 sheets
	Multi-purpose Tray	100 sheets	100 sheets
	Optional	550 sheets x 3 (Paper Feeder PF-A1)	550 sheets x 3 (Paper Feeder PF-A1)
Department ID		✗	300 Dept IDs
Secure Print		✗	✓ (with optional SD Card-C1)
Application Library		✗	✗
Device Memory (Standard)		128 MB	768 MB
Processor Speed		300 MHz	528 MHz + 264 MHz
Monthly Duty Cycle^{*1}		50,000 pages	100,000 pages
Recommended Monthly Print Volume		2,000 - 5,000 pages	4,000 - 10,000 pages
Dimensions (W x D x H)		514 x 463 x 282 mm	514 x 532 x 303 mm
Consumables	Model	Cartridge 333 Cartridge 333H	Cartridge 333 Cartridge 333H
	Bundled	10,000 pages ^{*2}	10,000 pages ^{*2}
	Other	-	-

A3 LASER SINGLE FUNCTION - COLOUR

LBP841Cdn



LBP843Cx



A4 Speed (ppm) mono / colour		A4: 26 / 26 ppm A3: 15 / 15 ppm	A4: 31 / 31 ppm A3: 15 / 15 ppm
Print Resolution		600 x 600 dpi 1200 x 1200 dpi 9600 (equivalent) x 600 dpi	600 x 600 dpi 1200 x 1200 dpi 9600 (equivalent) x 600 dpi
First Printout Time (FPOT; A4)		Approx. 7.9 / 9.9 secs (Monochrome / Colour)	Approx. 7.9 / 9.9 secs (Monochrome / Colour)
Auto Duplex Printing		✓	✓
Display		5-Line LCD	5-Line LCD
Interface / Connectivity	USB 2.0 High Speed & Ethernet	✓	✓
	Gigabit Ethernet	✓	✓
	Wi-Fi	X	X
	Direct Connection	X	X
Mobile Solutions	Canon PRINT Business	✓	✓
	Canon Print Service	✓	✓
	Apple AirPrint	X	X
	Mopria® Print Service	X	X
Page Description Language		UFR II, PCL 6	UFR II, PCL 6, PDF, XPS
Paper Input	Standard	250 sheets	250 sheets
	Multi-purpose Tray	100 sheets	100 sheets
	Optional	550 sheets x 3 (Paper Feeder PF-E1)	550 sheets x 3 (Paper Feeder PF-E1)
Department ID		X	300 Dept IDs
Secure Print		X	✓ (Requires optional SD Card-C1)
Application Library		X	X
Device Memory (Standard)		512 MB	1 GB
Processor Speed		528 MHz + 264 MHz	528 MHz + 264 MHz
Monthly Duty Cycle^{*1}		75,000 pages	120,000 pages
Recommended Monthly Print Volume		1,250 - 8,000 pages	3,000 - 13,000 pages
Dimensions (W x D x H)		545 x 591 x 361 mm	545 x 591 x 361 mm
Consumables	Model	Cartridge 335E BK / C / M / Y Cartridge 335 BK / C / M / Y	Cartridge 335E BK / C / M / Y Cartridge 335 BK / C / M / Y
	Bundled (Mono / Colour)	7,000 pages ^{*2} / 7,400 pages ^{*2}	7,000 pages ^{*2} / 7,400 pages ^{*2}
	Other	Waste Toner Box WT-722	Waste Toner Box WT-722

^{*1} Monthly Duty Cycle value provides a means of comparison for product robustness in relation to other Canon laser devices, and does not refer to actual maximum image output per month. ^{*2} Declared yield in accordance with ISO/IEC 19778

LASER MULTI-FUNCTION - MONOCHROME (4 IN 1)

MF235

MF237w


		MF235	MF237w	
PRINT	A4 Speed (ppm/cpm)	23 ppm	23 ppm	
	Resolution	600 x 600 dpi 1,200 x 1,200 dpi (equivalent)	600 x 600 dpi 1,200 x 1,200 dpi (equivalent)	
	First Printout Time (FPOT; A4)	Approx. 6 secs	Approx. 6 secs	
	Auto Duplex Printing	X	X	
SCAN	Resolution (optical)	600 x 600 dpi	600 x 600 dpi	
	Scan To	PC (USB)	PC (USB, Network)	
COPY	Copy Features	Collate, 2 on 1, 4 on 1, ID Card Copy	Collate, 2 on 1, 4 on 1, ID Card Copy	
FAX	Fax Reception Memory	256 pages	256 pages	
GENERAL SPECIFICATIONS	Display		6-Line Monochrome Touchscreen LCD	6-Line Monochrome Touchscreen LCD
	Interface / Connectivity	USB 2.0 High Speed & Ethernet	USB ONLY	✓
		Gigabit Ethernet	X	X
		Wi-Fi	X	✓
		Direct Connection	X	✓
	Mobile Solutions	Canon PRINT Business	X	✓
		Canon Print Service	X	✓
		Apple AirPrint	X	✓
		Mopria® Print Service	X	✓
	Page Description Language		UFR II LT	UFR II LT
	Auto Document Feeder		35 sheets	35 sheets
	Paper Input	Standard	250 sheets	250 sheets
		Multi-purpose Tray	1 sheet	1 sheet
		Optional	-	-
	Department ID		X	X
	Secure Print		X	X
	Application Library		X	X
	Device Memory (Standard)		128 MB	512 MB
	Processor Speed		175 MHz	400 MHz
	Monthly Duty Cycle^{*1}		15,000 pages	15,000 pages
Recommended Monthly Print Volume		500 - 2,000 pages	500 - 2,000 pages	
Dimensions (W x D x H)		390 x 371 x 360 mm	390 x 371 x 360 mm	
Consumables	Model	Cartridge 337	Cartridge 337	
	Bundled	1,700 pages ^{*2}	1,700 pages ^{*2}	
	Other	-	-	

LASER MULTI-FUNCTION - MONOCHROME (4 IN 1)

MF266dn



MF269dw



MF445dw



		MF266dn	MF269dw	MF445dw	
PRINT	A4 Speed (ppm/cpm)	28 ppm	28 ppm	38 ppm	
	Resolution	600 x 600 dpi 1200 x 1200 dpi (equivalent) 2400 (equivalent) x 600 dpi	600 x 600 dpi 1200 x 1200 dpi (equivalent) 2400 (equivalent) x 600 dpi	600 x 600 dpi 1,200 x 1,200 dpi (equivalent)	
	First Printout Time (FPOT; A4)	Approx. 5.2 secs	Approx. 5.2 secs	Approx. 5.5 secs	
	Auto Duplex Printing	✓	✓	✓	
SCAN	Resolution (optical)	600 x 600 dpi	600 x 600 dpi	600 x 600 dpi	
	Scan To	PC (USB, Network), SMB, Email	PC (USB, Network), SMB, Email	PC (USB, Network), USB Memory Device, Cloud (via MF Scan Utility), SMB, Email, FTP	
COPY	Copy Features	Collate, 2 on 1, 4 on 1, ID Card Copy, Passport Copy	Collate, 2 on 1, 4 on 1, ID Card Copy, Passport Copy	Collate, N on 1, ID Card Copy, Passport Copy	
FAX	Fax Reception Memory	256 pages	256 pages	512 pages	
GENERAL SPECIFICATIONS	Display		6-Line Monochrome Touchscreen LCD	6-Line Monochrome Touchscreen LCD	5.0" Colour Touchscreen LCD
	Interface / Connectivity	USB 2.0 High Speed & Ethernet	✓	✓	✓
		Gigabit Ethernet	X	X	✓
		Wi-Fi	X	✓	✓
		Direct Connection	X	✓	✓
	Mobile Solutions	Canon PRINT Business	✓	✓	✓
		Canon Print Service	✓	✓	✓
		Apple AirPrint	✓	✓	✓
		Mopria® Print Service	✓	✓	✓
	Page Description Language		UFR II LT, PCL 6	UFR II LT, PCL 6	UFR II, PCL 6, PostScript 3
	Auto Document Feeder		35 sheets	50 sheets (Duplex)	50 sheets (Single Pass Duplex)
	Paper Input	Standard	250 sheets	250 sheets	250 sheets
		Multi-purpose Tray	1 sheet	1 sheet	100 sheets
		Optional	-	-	550 sheets [Cassette Unit - AH1]
	Department ID		X	X	300 Dept IDs
	Secure Print		X	X	✓
	Application Library		X	X	✓
	Device Memory (Standard)		256 MB	256 MB	1 GB
	Processor Speed		400 MHz	400 MHz	800 MHz x 2
	Monthly Duty Cycle*1		30,000 pages	30,000 pages	80,000 pages
Recommended Monthly Print Volume		250 - 2,500 pages	250 - 2,500 pages	750 - 4,000 pages	
Dimensions (W x D x H)		390 x 405 x 375 mm	390 x 405 x 375 mm	453 x 464 x 392 mm	
Consumables	Model	Cartridge 051 Cartridge 051H Drum 051	Cartridge 051 Cartridge 051H Drum 051	Cartridge 057 Cartridge 057H	
	Bundled	1,700 pages*2	1,700 pages*2	3,100 pages*2	
	Other	-	-	-	

*1 Monthly Duty Cycle value provides a means of comparison for product robustness in relation to other Canon laser devices, and does not refer to actual maximum image output per month. *2 Declared yield in accordance with ISO/IEC 19752

LASER MULTI-FUNCTION - MONOCHROME (4 IN 1)

MF449x

MF543x


		MF449x	MF543x	
PRINT	A4 Speed (ppm/cpm)	38 ppm	43 ppm	
	Resolution	600 x 600 dpi 1,200 x 1,200 dpi (equivalent)	600 x 600 dpi 1,200 x 1,200 dpi (equivalent)	
	First Printout Time (FPOT; A4)	Approx. 5.5 secs	Approx. 5.7 secs	
	Auto Duplex Printing	✓	✓	
SCAN	Resolution (optical)	600 x 600 dpi	600 x 600 dpi	
	Scan To	PC (USB, Network), USB Memory Device, Cloud (via MF Scan Utility), SMB, Email, FTP	PC (USB, Network), USB Memory Device, Cloud (via MF Scan Utility), SMB, Email, FTP	
COPY	Copy Features	Collate, N on 1, ID Card Copy, Passport Copy	Collate, N on 1, ID Card Copy, Passport Copy	
	Fax Reception Memory	512 pages	512 pages	
GENERAL SPECIFICATIONS	Display	5.0" Colour Touchscreen LCD	5.0" Colour Touchscreen LCD	
	Interface / Connectivity	USB 2.0 High Speed & Ethernet	✓	✓
		Gigabit Ethernet	✓	✓
		Wi-Fi	✓	✓ (NFC)
		Direct Connection	✓	✓
	Mobile Solutions	Canon PRINT Business	✓	✓
		Canon Print Service	✓	✓
		Apple AirPrint	✓	✓
		Mopria® Print Service	✓	✓
	Page Description Language	UFR II, PCL 6, PostScript 3	UFR II, PCL 6, PostScript 3	
	Auto Document Feeder	50 sheets (Single Pass Duplex)	50 sheets (Single Pass Duplex)	
	Paper Input	Standard	250 sheets	550 sheets
		Multi-purpose Tray	100 sheet	100 sheet
		Optional	550 sheets [Cassette Unit - AH1]	550 sheets x 3 [Paper Feeder PF-C1]
	Department ID	300 Dept IDs	300 Dept IDs	
	Secure Print	✓	✓	
	Application Library	✓	✓	
Device Memory (Standard)	1 GB	1 GB		
Processor Speed	800 MHz x 2	800 MHz x 2		
Monthly Duty Cycle*1	80,000 pages	150,000 pages		
Recommended Monthly Print Volume	750 - 4,000 pages	2,000 - 7,500 pages		
Dimensions (W x D x H)	453 x 464 x 392 mm	494 x 464 x 452 mm		
Consumables	Model	Cartridge 057 Cartridge 057H	Cartridge 056 Cartridge 056L Cartridge 056H	
	Bundled	3,100 pages*2	5,100 pages*2	
	Other	-	-	

uniFLOW ONLINE EXPRESS (uOE)

Experience cloud-based print solution on supported imageCLASS printers. **uniFLOW Online Express** helps organization track device usage, control access, and make scanning simple.



Scan to know more about **uOE**

◉ SIMPLE SCANNING

Scan documents to email or Google Drive™ directly from the device.









◉ CENTRALIZED REPORTING AND CONTROL

Track usage and print costs effortlessly. The intuitive graphical dashboard and reports gives the administrator greater insights into usage trends and facilitates informed decisions for cost control measures.



◉ SECURITY

Enhance document and device security through authentication. Various authentication options are available to enhance users' convenience without compromising security.

uniFLOW Online Express Compatible Models				
Single-Function Printer	 LBP228x		 LBP664Cx	
Multi-Function Printer	 MF449x	 MF543x	 MF645Cx	 MF746Cx

LASER MULTI-FUNCTION - COLOUR (3 IN 1)

MF641Cw

MF643Cdw


		MF641Cw	MF643Cdw	
PRINT	A4 Speed (ppm/cpm)	18 ppm / 18 cpm	21 ppm / 21 cpm	
	Resolution	600 x 600 dpi 1,200 x 1,200 dpi (equivalent)	600 x 600 dpi 1,200 x 1,200 dpi (equivalent)	
	First Printout Time (FPOT; A4)	Approx. 10.4 / 10.5 secs (Monochrome / Colour)	Approx. 10.4 / 10.5 secs (Monochrome / Colour)	
	Auto Duplex Printing	X	✓	
SCAN	Resolution (optical)	600 x 600 dpi	600 x 600 dpi	
	Scan To	PC (USB, Network), USB Memory Device, Cloud (via MF Scan Utility), SMB, Email, FTP	PC (USB, Network), USB Memory Device, Cloud (via MF Scan Utility), SMB, Email, FTP	
COPY	Copy Features	Collate, 2 on 1, 4 on 1, ID Card Copy, Passport Copy	Collate, 2 on 1, 4 on 1, ID Card Copy, Passport Copy	
FAX	Fax Reception Memory	-	-	
GENERAL SPECIFICATIONS	Display		5.0" Colour Touchscreen LCD	
	Interface / Connectivity	USB 2.0 High Speed & Ethernet	✓	✓
		Gigabit Ethernet	✓	✓
		Wi-Fi	✓	✓
		Direct Connection	✓	✓
	Mobile Solutions	Canon PRINT Business	✓	✓
		Canon Print Service	✓	✓
		Apple AirPrint	✓	✓
		Mopria® Print Service	✓	✓
	Page Description Language		UFR II	UFR II, PCL 6
	Auto Document Feeder		-	50 sheets
	Paper Input	Standard	250 sheets	250 sheets
		Multi-purpose Tray	1 sheet	1 sheet
		Optional	-	-
Department ID		✓	✓	
Secure Print		✓	✓	
Application Library		✓	✓	
Device Memory (Standard)		1 GB	1 GB	
Processor Speed		800 MHz x 2	800 MHz x 2	
Monthly Duty Cycle¹		30,000 pages	30,000 pages	
Recommended Monthly Print Volume		250 - 2,500 pages	250 - 2,500 pages	
Dimensions (W x D x H)		451 x 460 x 360 mm	451 x 460 x 413 mm	
Consumables	Model	Cartridge 054 BK / C / M / Y Cartridge 054H BK / C / M / Y	Cartridge 054 BK / C / M / Y Cartridge 054H BK / C / M / Y	
	Bundled (Mono/Colour)	1,500 pages ² /680 pages ²	1,500 pages ² /680 pages ²	
	Other	-	-	

LASER MULTI-FUNCTION - COLOUR (4 IN 1)

MF645Cx



MF746Cx



		MF645Cx	MF746Cx	
PRINT	A4 Speed (ppm/cpm)	21 ppm / 21 ppm	27 ppm / 27 ppm	
	Resolution	600 x 600 dpi 1,200 x 1,200 dpi (equivalent)	600 x 600 dpi 1,200 x 1,200 dpi (equivalent)	
	First Printout Time (FPOT; A4)	Approx. 10.4 / 10.5 secs (Monochrome / Colour)	Approx. 7.7 / 8.6 secs (Monochrome / Colour)	
	Auto Duplex Printing	✓	✓	
SCAN	Resolution (optical)	600 x 600 dpi	600 x 600 dpi	
	Scan To	PC (USB, Network), USB Memory Device, Cloud (via MF Scan Utility), SMB, Email, FTP	PC (USB, Network), USB Memory Device, Cloud (via MF Scan Utility), SMB, Email, FTP	
COPY	Copy Features	Collate, 2 on 1, 4 on 1, ID Card Copy, Passport Copy	Collate, 2 on 1, 4 on 1, ID Card Copy, Passport Copy	
	Fax Reception Memory	512 pages	512 pages	
GENERAL SPECIFICATIONS	Display	5.0" Colour Touchscreen LCD	5.0" Colour Touchscreen LCD	
	Interface / Connectivity	USB 2.0 High Speed & Ethernet	✓	✓
		Gigabit Ethernet	✓	✓
		Wi-Fi	✓	✓ (NFC)
		Direct Connection	✓	✓
	Mobile Solutions	Canon PRINT Business	✓	✓
		Canon Print Service	✓	✓
		Apple AirPrint	✓	✓
		Mopria® Print Service	✓	✓
	Page Description Language	UFR II, PCL 6, PostScript 3	UFR II, PCL 6, PostScript 3	
	Auto Document Feeder	50 sheets (Single Pass Duplex)	50 sheets (Single Pass Duplex)	
	Paper Input	Standard	250 sheets	250 sheets
		Multi-purpose Tray	1 sheet	50 sheets
		Optional	-	550 sheets [Cassette Unit - AF1 (550 sheets)]
	Department ID	✓	✓	
	Secure Print	✓	✓	
Application Library	✓	✓		
Device Memory (Standard)	1 GB	1 GB		
Processor Speed	800 MHz x 2	800 MHz x 2		
Monthly Duty Cycle ^{*1}	30,000 pages	50,000 pages		
Recommended Monthly Print Volume	250 - 2,500 pages	750 - 4,000 pages		
Dimensions (W x D x H)	451 x 460 x 413 mm	471 x 469 x 460 mm		
Consumables	Model	Cartridge 054 BK / C / M / Y Cartridge 054H BK / C / M / Y	Cartridge 055 BK / C / M / Y Cartridge 055H BK / C / M / Y	
	Bundled (Mono/Colour)	1,500 pages ^{*2} / 680 pages ^{*2}	2,300 pages ^{*2} / 1,200 pages ^{*2}	
	Other	-	-	

^{*1} Monthly Duty Cycle value provides a means of comparison for product robustness in relation to other Canon laser devices, and does not refer to actual maximum image output per month. ^{*2} Declared yield in accordance with ISO/IEC 19798




CONSUMABLES

Consumables	Page Yield	LBP162dw	LBP224dw LBP228x	LBP325x	LBP351x LBP352x	LBP421CW LBP423Cdw	LBP644Cx	LBP712Cx	MF235	MF237W	MF266dn MF269dw	MF445dnw MF449x	MF543x	MF641CW MF643Cdw MF645Cx	MF746Cx	LBP8100n	LBP8780x	LBP841Cdn LBP843Cx
Cartridge 337	[2,400 pages*1]							✓	✓									
Cartridge 051	[1,700 pages*1]	✓									✓							
Cartridge 051H	[4,100 pages*1]	✓									✓							
Drum 051	[23,000 pages]	✓									✓							
Cartridge 057	[3,100 pages*1]		✓									✓						
Cartridge 057H	[10,000 pages*1]		✓									✓						
Cartridge 056	[10,000 pages*1]			✓									✓					
Cartridge 056L	[5,100 pages*1]			✓									✓					
Cartridge 056H	[21,000 pages*1]			✓									✓					
Cartridge 039	[11,000 pages*1]				✓													
Cartridge 039H	[25,000 pages*1]				✓													
Cartridge 054 BK	[1,500 pages*2]					✓								✓				
Cartridge 054H BK	[3,100 pages*2]					✓								✓				
Cartridge 054 CMY	[1,200 pages*2]					✓								✓				
Cartridge 054H CMY	[2,300 pages*2]					✓								✓				
Cartridge 055 BK	[2,300 pages*2]						✓								✓			
Cartridge 055H BK	[7,600 pages*2]						✓								✓			
Cartridge 055 CMY	[2,100 pages*2]						✓								✓			
Cartridge 055H CMY	[5,900 pages*2]						✓								✓			
Cartridge 040 BK	[6,300 pages*2]							✓										
Cartridge 040H BK	[12,500 pages*2]							✓										
Cartridge 040 CMY	[5,400 pages*2]							✓										
Cartridge 040H CMY	[10,000 pages*2]							✓										
Waste Toner WT-B1	[54,000 impressions]							✓										
Cartridge 333	[10,000 pages*1]															✓	✓	
Cartridge 333H	[17,000 pages*1]															✓	✓	
Cartridge 335E BK	[7,000 pages*2]																	✓
Cartridge 335 BK	[13,000 pages*2]																	✓
Cartridge 335E CMY	[7,400 pages*2]																	✓
Cartridge 335 CMY	[16,500 pages*2]																	✓
Waste Toner WT-722	[150,000 impressions]																	✓

*1 Declared yield in accordance to ISO/IEC 19752

*2 Declared yield in accordance to ISO/IEC 19798

ACCESSORIES

		LBP226dw	LBP228x	LBP325x	LBP381x	LBP382x	LBP664Cx	LBP712Cx	MF445dw	MF449x	MF563x	MF645Cx	MF746Cx	LBP8100n	LBP8180x	LBP841Cdn	LBP843Cx
Paper Feeder 	Cassette Feeding Unit-AH1 (550 sheets)	✓	✓						✓	✓							
	Cassette Unit AF-1 (550 sheets)						✓					✓					
	Paper Deck PD-G1 (1500 sheets)				✓	✓											
	Paper Feeder PF-F1 (550 sheets)													✓	✓		
Paper Deck 	Paper Feeder PF-B1 (500 sheets)				✓	✓											
	Paper Feeder PF-C1 (550 sheets)			✓							✓						
	Paper Feeder PF-D1 (550 sheets)							✓									
	Paper Feeder PF-E1 (550 sheets)															✓	✓
Cassette 	Envelope Feeder EF-A1 (75 sheets)				✓	✓											
	A5 Cassette C-A1 (500 sheets)				✓	✓											
	Custom Media Cassette CM-A1 (450 sheets)				✓	✓											
	Universal Cassette UC-A1 (550 sheets)													✓	✓		
Barcode Printing Kit	Barcode Printing Kit-E1		✓				✓			✓	✓	✓	✓				
	Barcode Printing Kit-F1			✓	✓	✓		✓							✓		✓
Others	Duplex Unit DU-D1													✓			
	Mi-Card Attachment Kit-B1		✓	✓			✓			✓	✓	✓	✓				
	PCL Font Set-C1				✓	✓											
	SD Card - C1			✓	✓	✓		✓							✓		✓



Delighting You Always

SOUTH & SOUTHEAST ASIA REGIONAL HEADQUARTERS

CANON SINGAPORE PTE. LTD.

1 Fusionopolis Place, #15-10 Galaxis, Singapore 138522
Tel : 65-6799 8888
Fax : 65-6799 8882
<https://asia.canon>

CANON OFFICES

HONG KONG

Canon Hongkong Co. Ltd
Tel : 852-3191 2388
Fax : 852-2369 3800
<https://hk.canon>

INDIA

Canon India Pvt. Ltd.
Tel : 91-124-416 0000
Tel : 91-124-416 0011
<https://in.canon>

MALAYSIA

Canon Marketing (Malaysia) Sdn. Bhd.
Tel : 60-3 7844 6000
Fax : 60-3 7845 0505
<https://my.canon>

PHILIPPINES

Canon Marketing (Philippines), Inc.
Tel : 632-884-9090
Fax : 632-556-1456
<https://ph.canon>

SINGAPORE

Canon Singapore Pte. Ltd.
Tel : 65-6799-8888
Fax : 65-6799-8882
<https://sg.canon>

THAILAND

Canon Marketing (Thailand) Co. Ltd
Tel : 66-2-344 9999
Fax : 66-2-344 9960
<https://th.canon>

VIETNAM

Canon Marketing (Vietnam) Co. Ltd
Tel : 84-8-3820 0466
Fax : 84-8-3820 0477
<https://vn.canon>

CANON BUSINESS PARTNERS

AFGHANISTAN

Megaplus Afghanistan Ltd.
Tel : 93 700 228 832 / 700 979 511
Fax : 93 20 220 1259
Email: info@megaplus.com.af

BANGLADESH

J. A. N. Associates Ltd.
Tel : 880-2 9660 601
Fax : 880-2 8610 410
www.jan-bd.com

BRUNEI

Interhouse Company
Tel : 673-2-653-001
Fax : 673-2-653-003
www.ihc.com.bn

CAMBODIA

i-Click Marketing Co., Ltd.
Tel : 855-23-996638
Fax : 855-23-996639
www.i-qlck.com

Royal Cambodia Co. Ltd.

Tel : 855-23-428955
Fax : 855-23-722961
www.royalcambodia.com.kh

INDONESIA

PT Samafitro
Tel : 62-21 345 5521
Fax : 62-21 384 4271
www.samafitro.co.id

MYANMAR

Myanmar Golden Rock International Co., Ltd.
Tel : 95-1 654810 to 19 (10 Lines)
Fax : 95-1 654820
Email : sales@mgr.com.mm

MONGOLIA

ITZone LLC
Tel : 976-11-323705
Fax : 976-11-312699
www.itzone.mn/en

MALDIVES

SIMDI Company (Pvt) Ltd.
Tel : 960-333 4421
Fax : 960-333 4424
www.simdi.com

NEPAL

International Electronics Concern (P) Ltd
Tel : 977-1 442 1991
Fax : 977-1-442 1909
www.iec.com.np

PAKISTAN

Megaplus Pakistan
Tel : 111 00 3355
Fax : 92-51-222 8430
www.megaplus.com.pk

Shirazi Trading Company (Pvt.) Limited
Tel : (92-21)38704830-41, 35170851-54
Fax : (92-21)-35170860
Email : stc@stc.atlas.pk
www.stc.atlas.pk

SRI LANKA

Metropolitan Office (Pvt) Ltd
Tel : 94-11-470 0200
Fax : 94-11-470 0267
www.metropolitan.lk

This document is for general information only and contents are subject to change without notice. Errors and omissions excepted. Weights and dimensions are approximate. Options, name and availability may vary by regions. Nothing in this document should be construed as a warranty. We expressly disclaim any liability or contractual obligations in connection with this document. Trademarks belong to their respective owners.

Dealer's Stamp